



**Work
Performance
Intelligence**



Work





Process

2. Link with performance

A performance measure is added (e.g. sales numbers, manager evaluations, peer-to-peer feedback, etc.)

4. Match

Match with employees to develop or relocate . Match with candidates to see if they have the right profile

1. Measure skills

Using the open WorkPi assessment marketplace

3. Link with jobs

WorkPi creates a high-performing profile for every job in the company (including context factors and skill combinations)

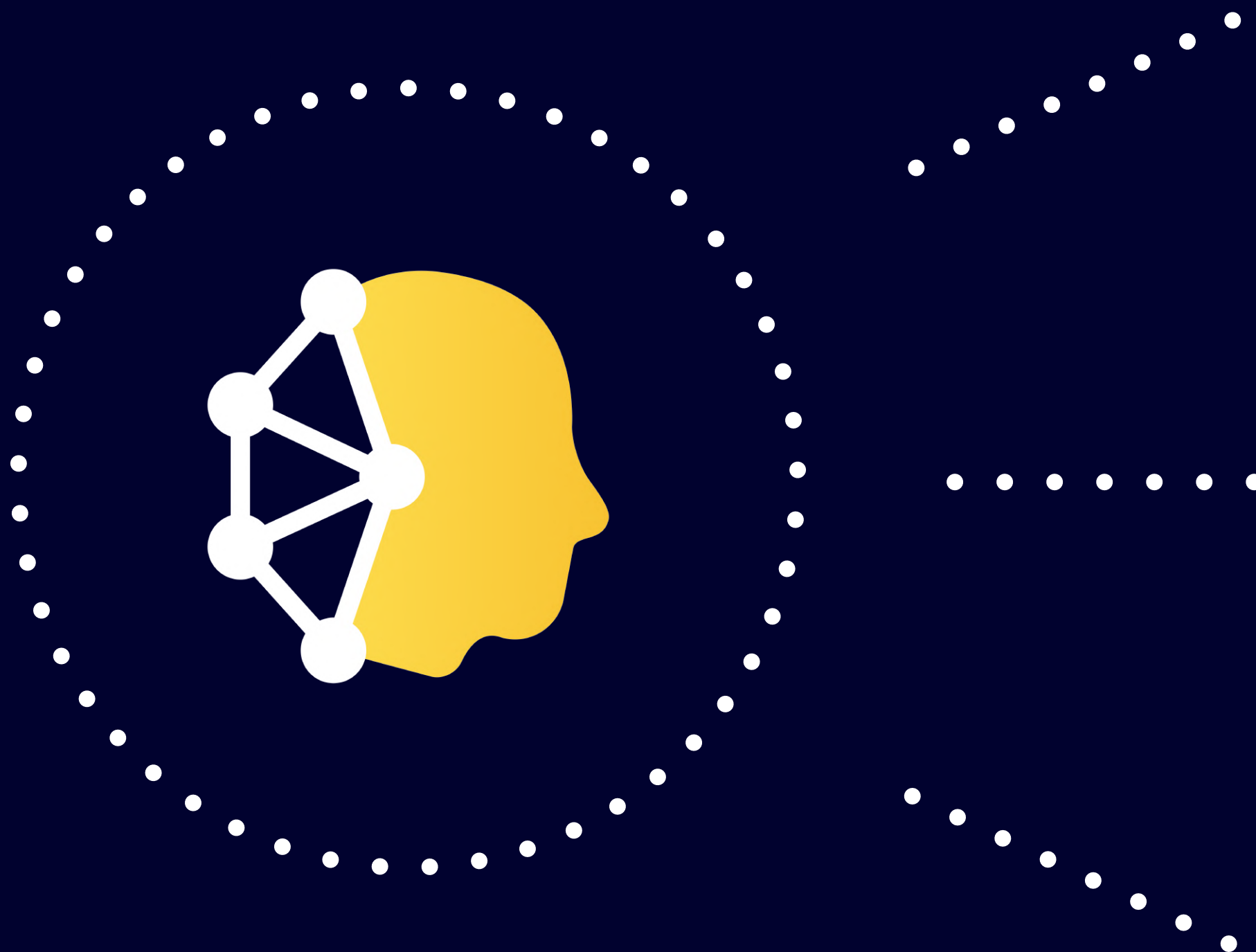
5. Track, learn & improve

WorkPi will learn from new hires and relocations, to improve its matchmaking, performance reviews and more (AI)





Core pillars



Skills measurement & development platform

We measure the skills, characteristics & performance of employees across various jobs and link them with performance, to continuously measure the most essential indicators for the jobs of today and tomorrow.



Open 3rd party integration platform

By offering a one-stop-shop for assessments, learning tools, peer reviews and more, we remove the boundaries of integration and accelerate the learning curve of our users.



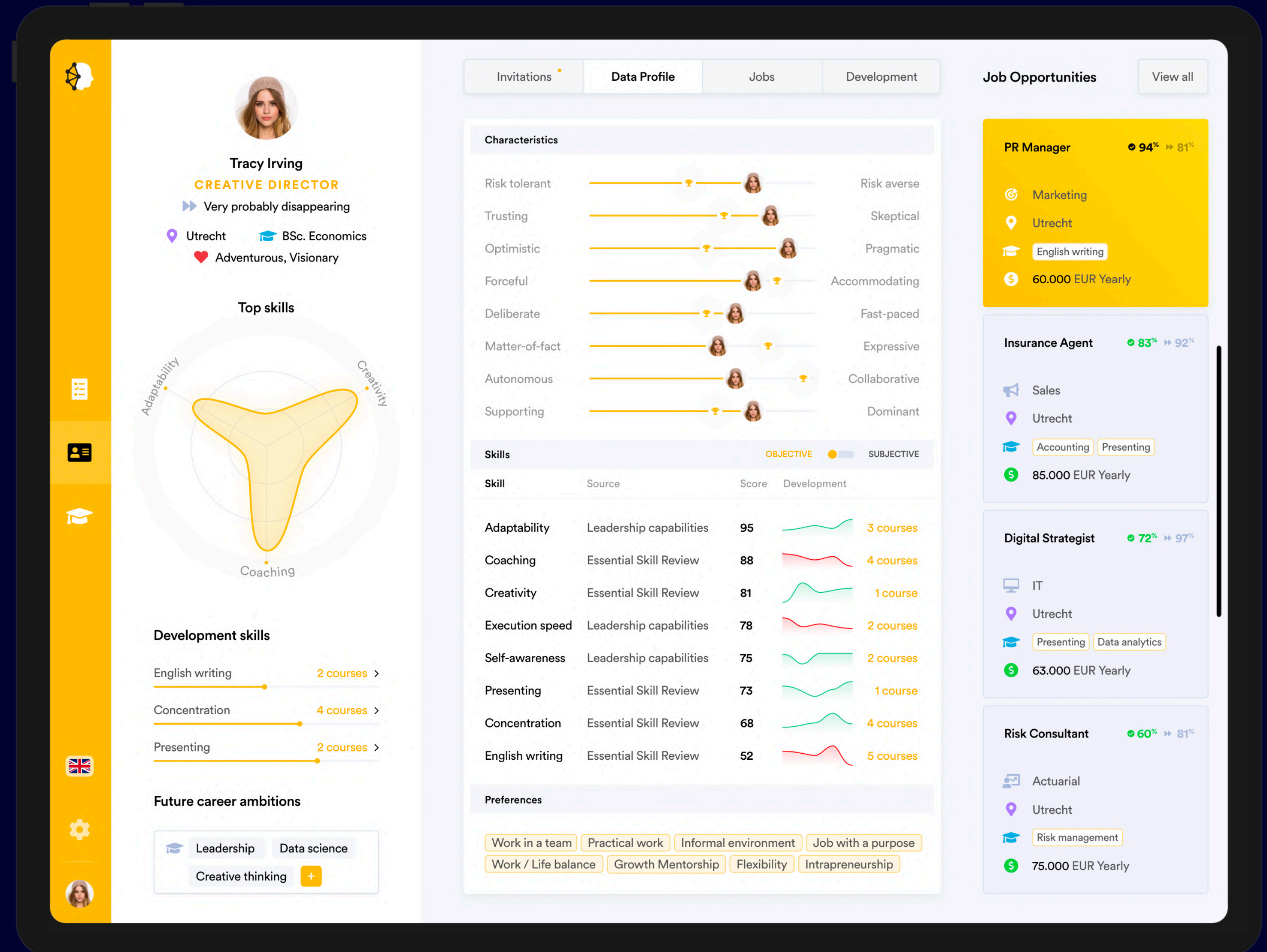
Cross-industry data insights

Companies have a lot of data stuck in 'data silos'. We break data out of these silos to unleash the power that they possess. By ensuring safe, personal SSI wallets for all our users, we will be able to build worlds first cross company, cross industry skill & performance database.



Dashboard

Through our dashboard, users gain insights into their skill, performance and learning curves. It measures the most important skillsets for the jobs of today and tomorrow.





WorkPi

By seamlessly integrating with every LXP, LMS, assessment and HR platform, we analyse skills, characteristics and preferences of employees from every sector and match them with peer-to-peer performance reviews. By doing so, we will create world largest skill & performance database, that will enable us to provide employers and employees with data driven insights, personalised learning and skill based unbiased hiring & matching.



Go To Market

1

Leverage our C-level network

Attained through our TEN and Whyz network.

2

Integrate with service providers

LMS, LXP, learning providers, assessment providers, personality tests, etc.

3

Launch in different industries

By launching in different industries, we enable ourselves to measure different type of job.

Pipeline

50

Companies showed interest

23

Second conversations in 14 different industries

12

Companies want to participate in a paid pilot

3

Ongoing negotiations with 2000+ employee companies

1

Paying customer (150k)



Work X

Work X is a **zero-marginal-cost decentralized platform** economy, designed to **match job-seekers** and **freelancer** with their perfect employer. Work X is powered by a utility token and is governed by a DAO. Work X is a **non-profit** organisation, that will generate a large **competitive advantage** for **WorkPi**, as it offers a **data-fitted, unbiased matching & hiring** tool for our users. Additionally, Work X users can **enrich their data profile** with assessment & development courses offered **on WorkPi** and store it in their personal **SSI wallet**; making it a safe and secure environment.



Work X



Skill & performance matching

Match your data profile with a successful job profile through our smart Work Intelligence Lab and find a job that fits your culture, passion, skills, performance & personal development.



Zero-marginal-fee platform economy

Because we are blockchain based, we don't need 30% commissions for matching. We ask a maximum of 5%, always and forever, so our users can use our platform, without losing their money.

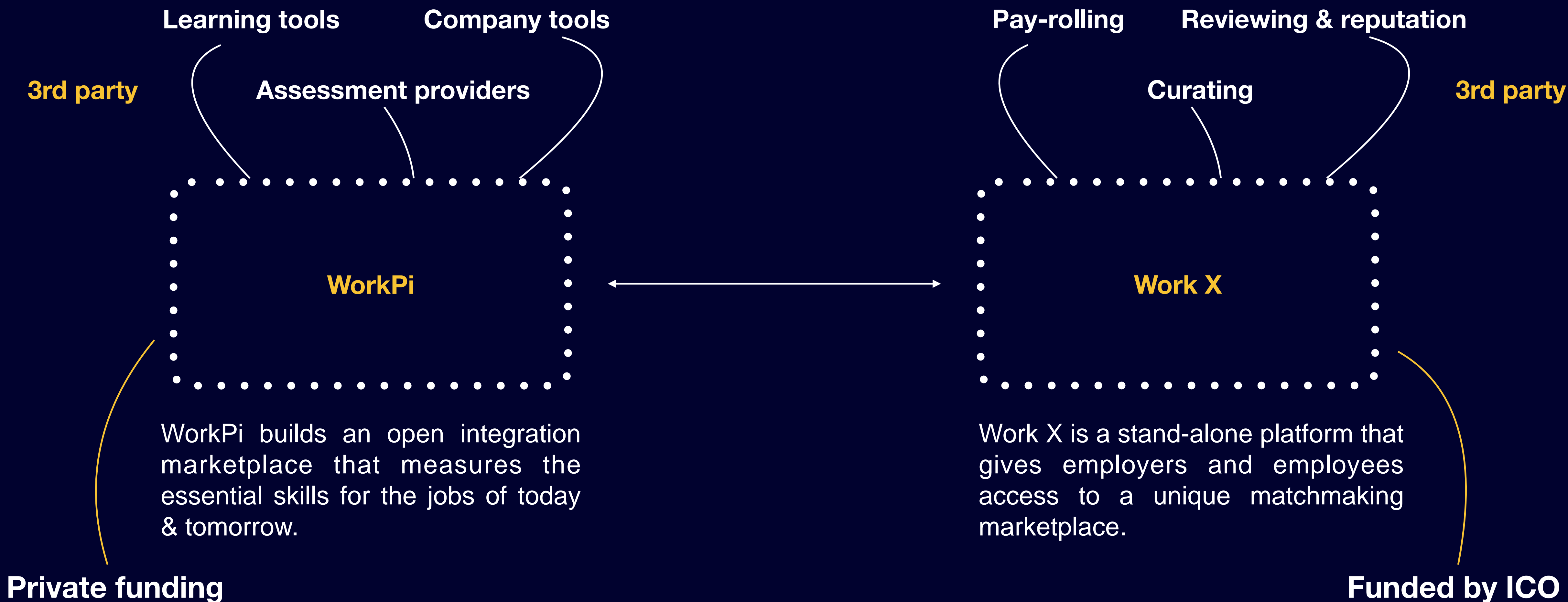


Self Sovereign Identity

The data you generate is yours, as it should be. Stored in your SSI wallet, you get to control who accesses your data. Regain control over your personal identity.



Infrastructure





Traction

2019 Pilot on SSI together with Rabobank & Dutch Blockchain Coalition



2020 Winner of the International blockchain & AI hackathon 'momentum'

MOMENTUM



2020 Validation by Yes!Delft Govtech Validation Lab

YES! DELFT

2021 Successful pre-seed round

2021 First paid pilot of €150.000





Market Size

TAM

World Wide Company analysis

€5.500.000.000

/ annual*

*Calculated based on top 500 companies world-wide and their employees, multiplied by a €3,- monthly fee per user.

SAM

Top 100 Dutch Companies

€60.000.000

/ annual*

*Calculated based on top 100 dutch companies and their employees, multiplied by a €3,- monthly fee per user.

SOM

20 Dutch Companies in Our Network

€14.000.000

/ annual

*Calculated based on 20 dutch companies in our sales pipeline and their employees, multiplied by a €3,- monthly fee per user.



Team



Rik Rapmund
CEO



Daniel de Witte
CTO



Hidde Kehrer
COO



Dragos Podaru
Full-Stack Developer



Pavlik Kiselev
*Quality Assurance
Officer*



**Darius-Flavius
Costolaș**
Full-Stack Developer



Questions?
Get in touch



Rik Rapmund
+31 6 34 27 16 06
rik@workpi.io
www.workpi.com